

TRANS-EEYOU ISTCHEE REGIONAL MULTI-PURPOSE TRAIL GENERAL GUIDELINES

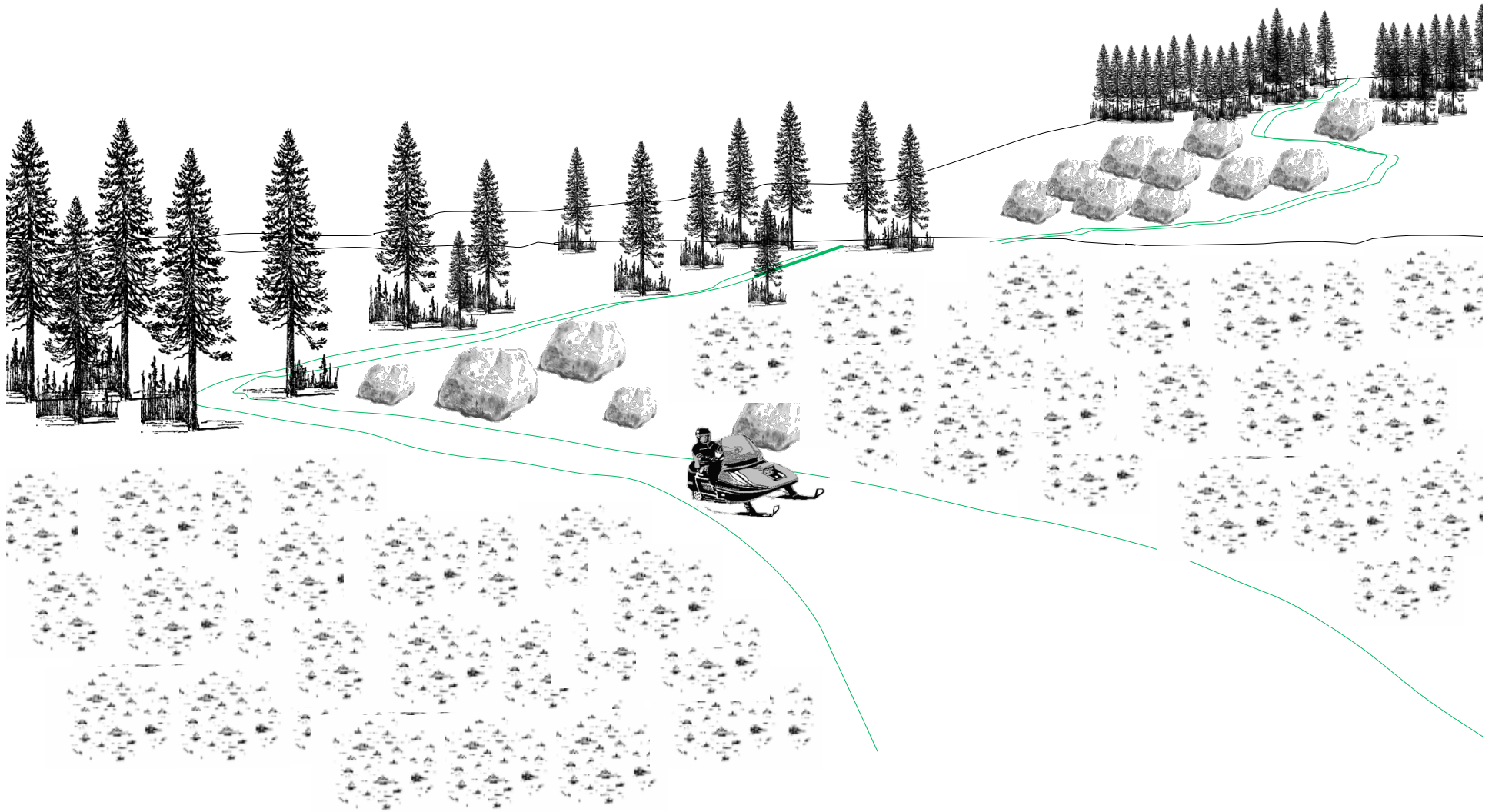
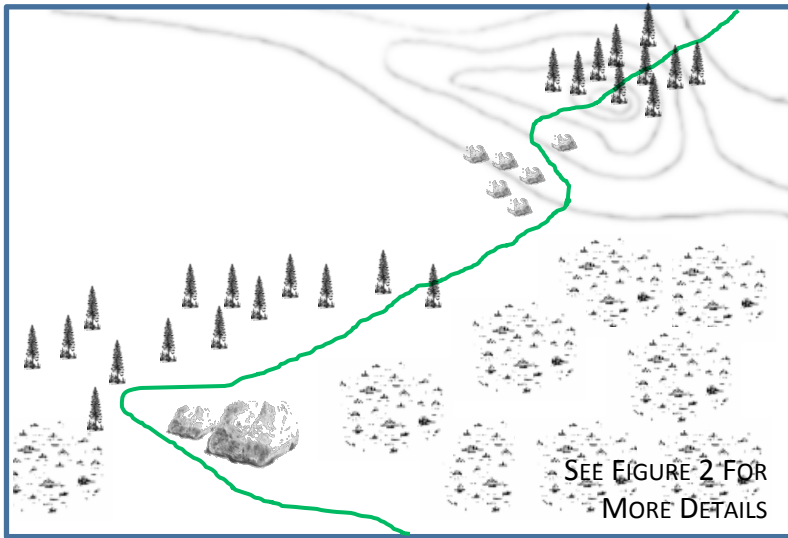


FIGURE 1: TRAIL DESIGN AND MAINTENANCE

TRAIL DESIGN



MAINTENANCE

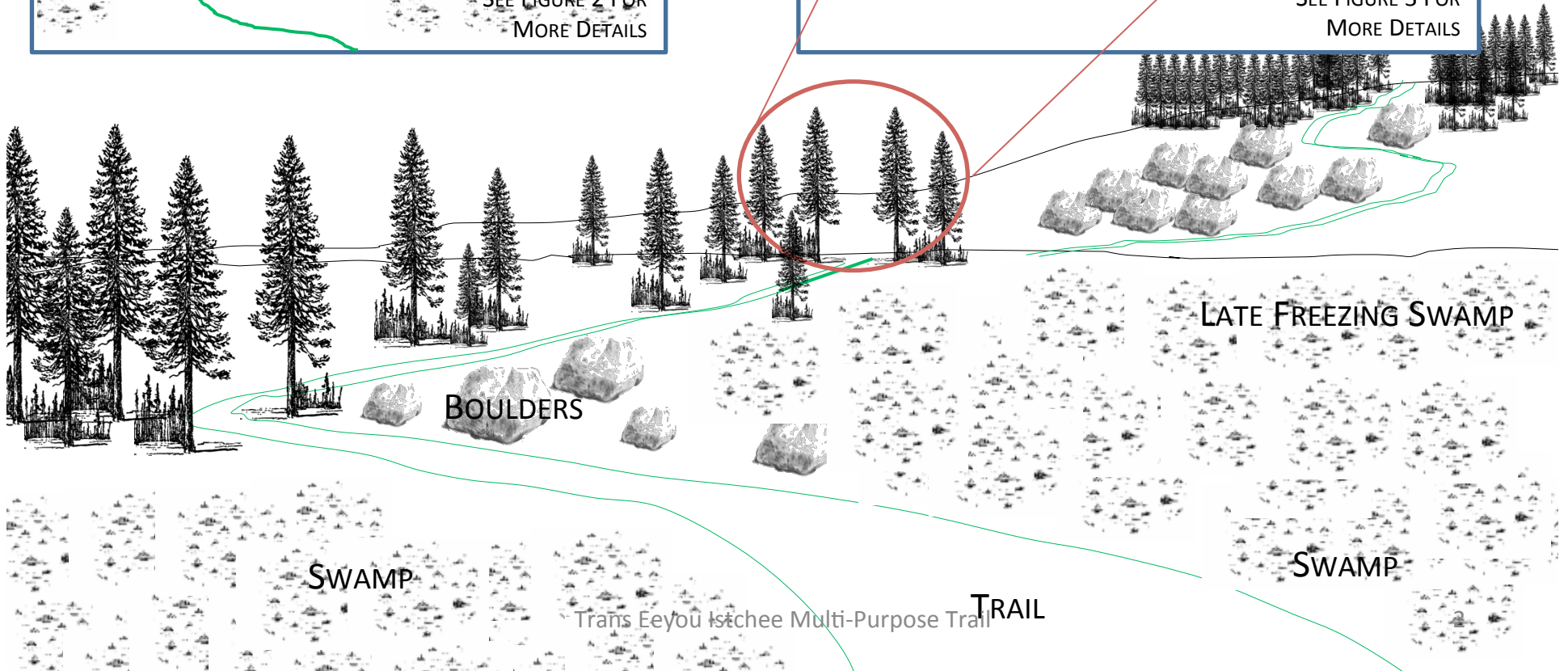
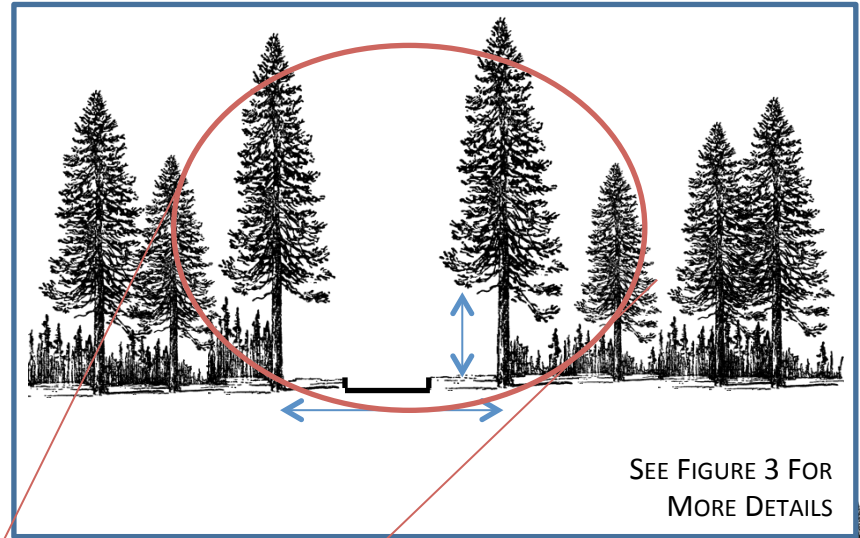


FIGURE 2: TRAIL DESIGN AND SIGNAGE

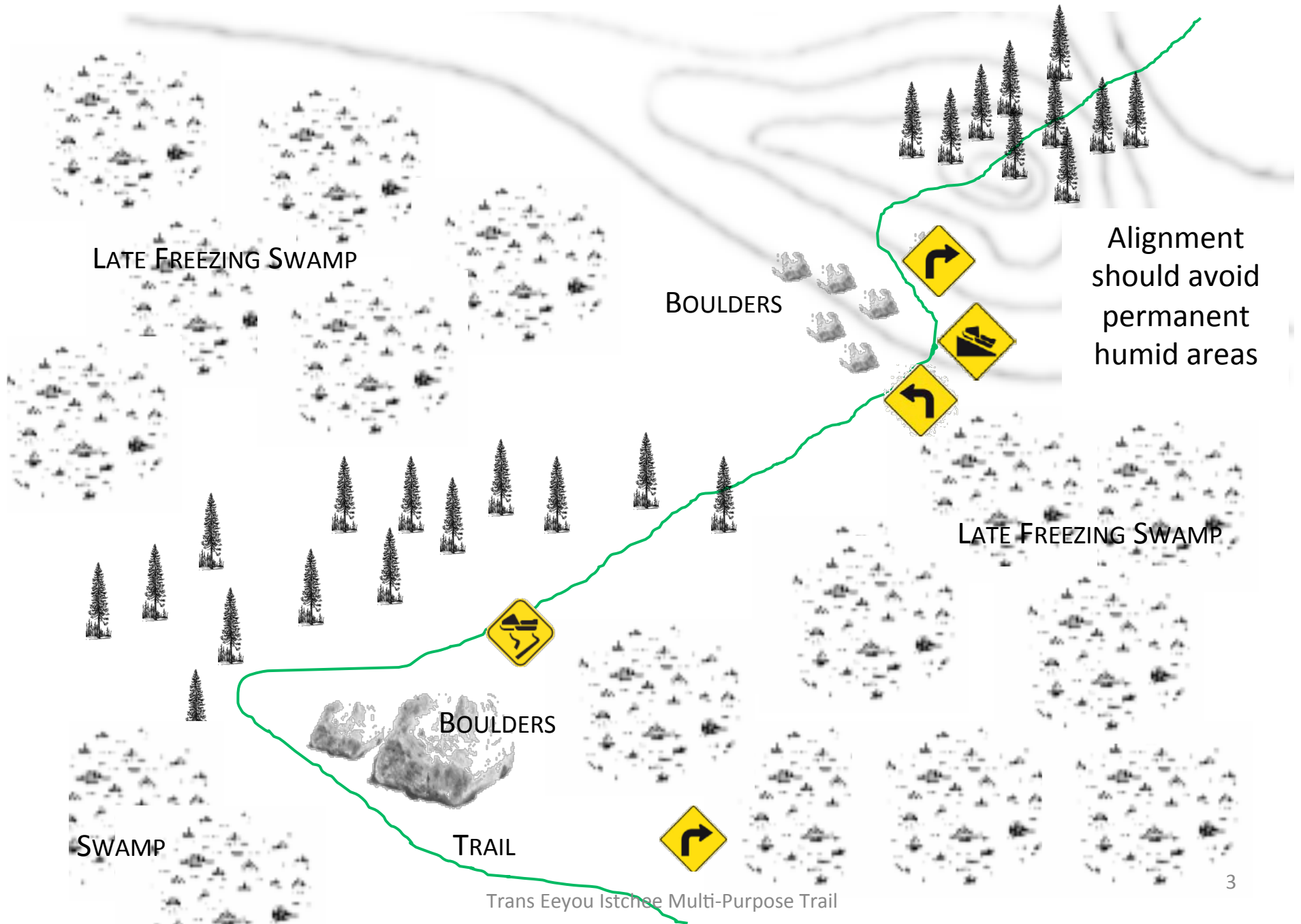
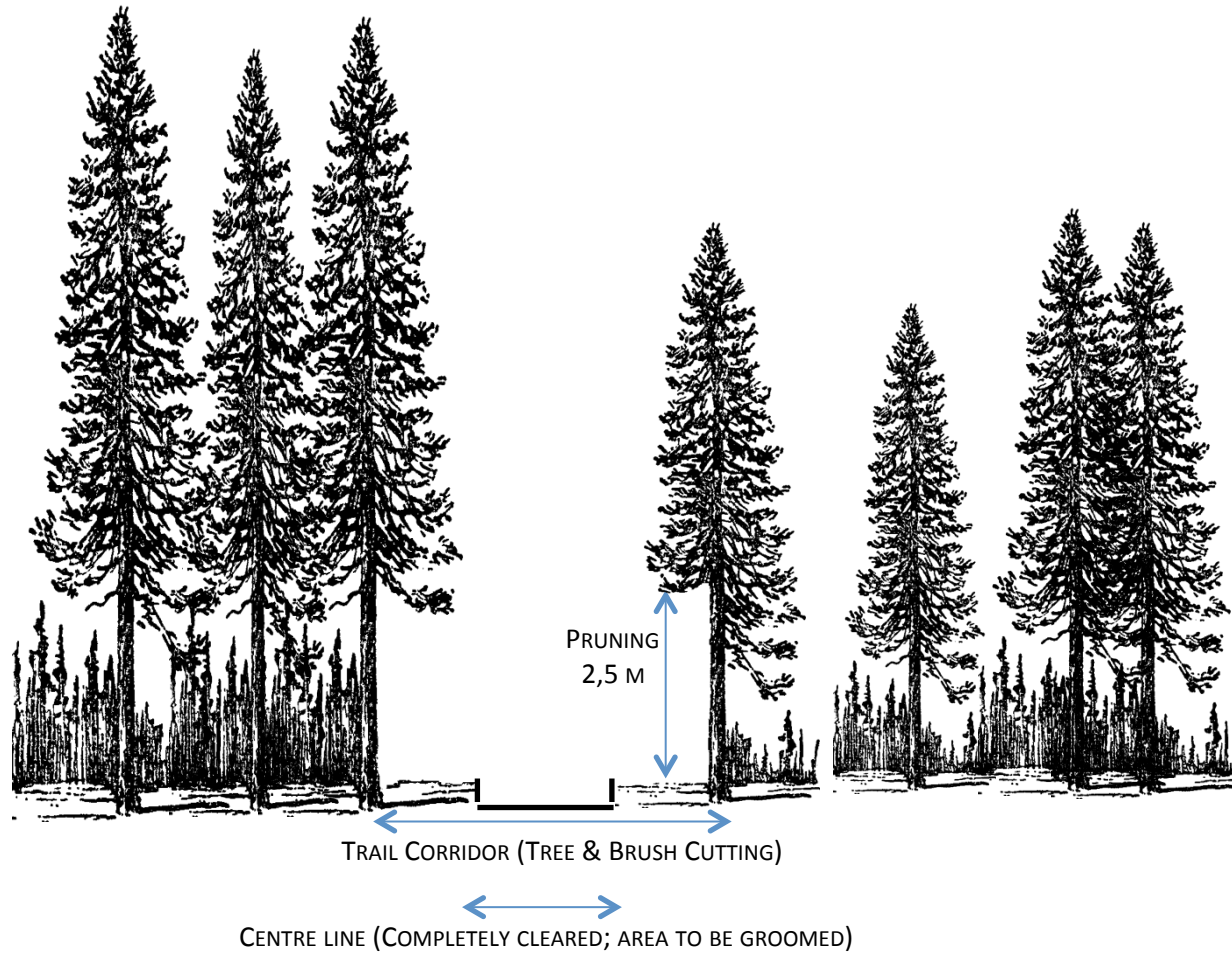


FIGURE 3: DIMENSIONS



SEE **TABLE 1** FOR COSTS

TABLE 1 COST FOR TRAIL TYPES

	Community Trails (within 10-km of community)	Trapline Trails (outside 10-km radius of community)
DESCRIPTION	CENTER LINE 3 M	CENTER LINE 1.5 M
	TRAIL CORRIDOR 5 M	TRAIL CORRIDOR 3 M
	NO REST AREAS	REST AREAS EVERY 5 KM WIDTH 5 M LENGTH 20 M
PRICE	ESTIMATED PRICE PER KM \$ 2,800	ESTIMATED PRICE PER KM \$ 1,875
	ESTIMATE FOR 10-KM TRAIL \$ 28,000	ESTIMATE FOR 30-KM TRAIL \$ 56,250

ASSUMED PRODUCTIVITY: 0,10 ha/DAY

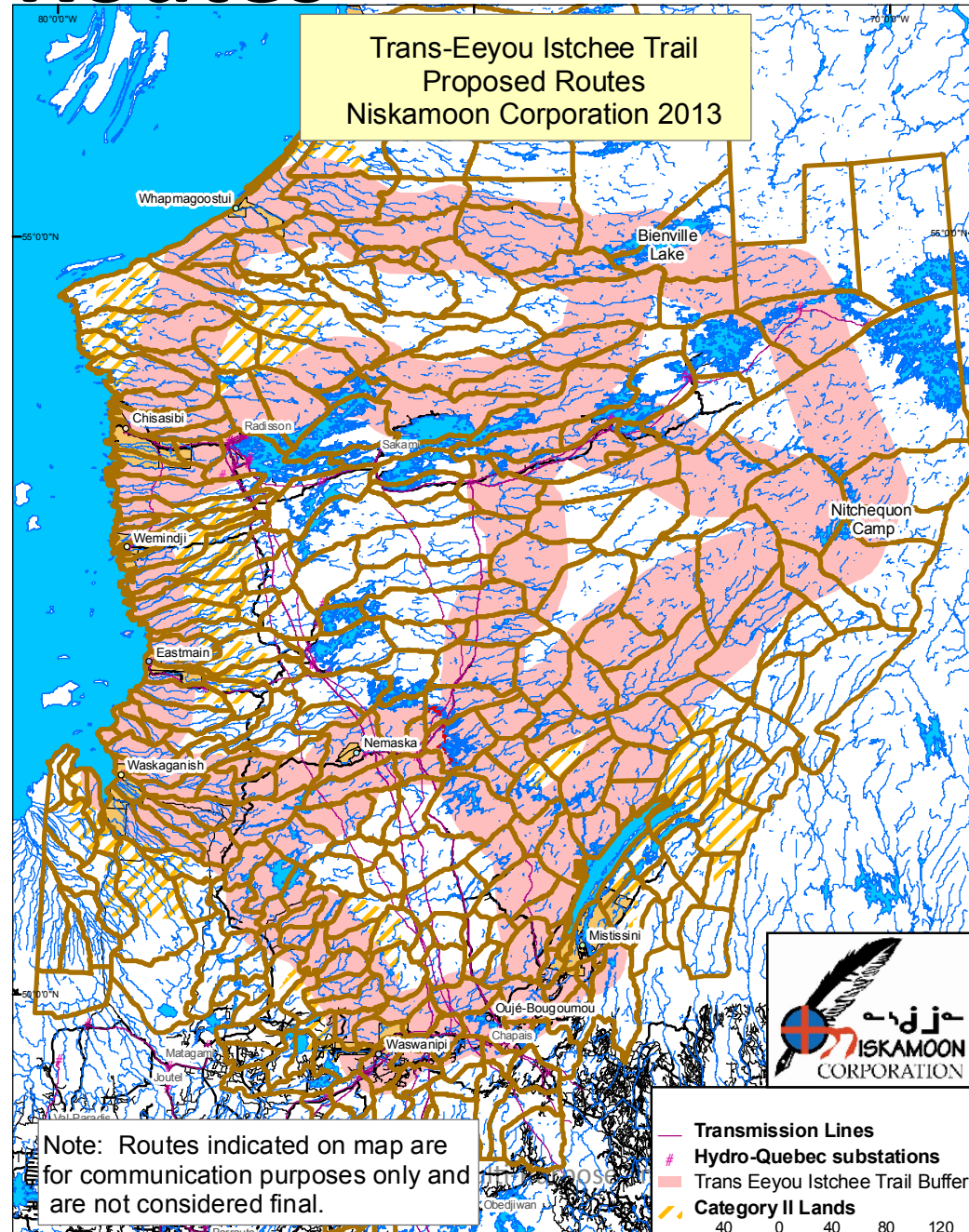
COMMUNITY TRAILS: \$ 2,800/ KM

TRAPLINE TRAILS: \$ 1,875/ KM

STREAM CROSSING: \$ 870/ UNIT



Proposed Routes



Main Elements

Trapline participation in project

(Tallymen, land users)

- Will choose location and alignment of trail.
- Will assess the number of crossings required.
- Will assess number of signs required.
- Will carry out works on the traplines applying rates presented above.

Trail Connectivity

- Trail must connect to neighbouring traplines.
- Must eventually connect to 2 communities on either side of trapline (must serve as a link between two communities).

Long-term Considerations

- Community ownership of trail
 - Grooming and maintenance
 - Long-term use of trail, managing other uses, etc.
- Secondary trails network (once main trail completed)

S.W.O.T. Analysis

(work in progress)



Strengths

- Benefits as many Cree users as possible.
- Rejuvenates old routes formerly used by Crees.
- Standardizes expectations from land users regarding quality of trails.
- Can be used year-round.
- Promotes healthy living.
- Fully developed by land users themselves (including alignment)

Opportunities

- Can be used as a motor for tourism development by community.
- Trail can generate revenue thereby becoming self-sufficient.
- Trail can be used for journeys, wellness walks, etc.
- Crees can define their own way of doing trails to develop their territory on their terms (while moratorium on outfitting is still in place).

Weaknesses (Challenges)

- Not all land users enthusiastic about increasing access onto traplines.
- Some land users see trail as unnecessary.

Threats

- Can result in increased hunting in sensitive areas.
- May alienate Niskamoon funding programs among some land users who do not support program.